

# ARROWHEAD

Grand high-performance estate home designed for expansive living, exceptional comfort, and long-term efficiency at scale home.

LIVABLE AREA

6102 SQ FT

+ GARAGE

2,443 SQ FT

BEDROOMS

3

BATHROOMS

5

5-10% OFF  
UNTIL JAN 31



\* Exterior materials, colours, and interior finishes are fully customizable and shown for illustrative purposes only.

## OVERVIEW

- **Best suited for:** Estate-scale custom home builds, Large families or multi-generational living
- **Primary value:** Spacious estate living paired with exceptional comfort and energy performance.
- **Delivery:** engineered panels fabricated off-site for precision

## INCLUDED & FLEXIBLE

### INCLUDED

- Engineered prefab panels
- High-performance enclosure
- Airtightness-first detailing
- Install guidance + coordination

### FLEXIBLE

- Layout adjustments
- (within limits)
- Exterior finishes
- Window/door package
- Essentials vs Turnkey scope

## ENVIRONMENTAL FOOTPRINT

- Minimal embodied carbon through efficient panelized build
- Lower operational energy use than conventional recreational homes
- Reduced site impact, preserving the natural character of the building site

## EVERYDAY COMFORT

- A sense of peace indoors driven by exceptionally quiet interiors
- Even temperatures that support year-round comfort in all seasons
- Calm, settled spaces designed for rest, retreat, and everyday living

## ESTIMATED PRICING

### PANELIZED BUILDING ENVELOPE

**\$978K** STARTING

- Engineered panel scope
- Off-site quality control
- Predictable sequencing

### COMPLETE TURNKEY HOME

**\$2.475M** STARTING

- Foundation to move-in
- Trades + coordination
- Finishes affect final cost

Pricing shown is for planning only and varies by design scope, site conditions, schedule, and finish level.

## NEXT STEPS:

If Arrowhead is a good fit for your project, We'll review your site, timeline, and preferred package.



(705) 286-0019



info@quantumpassivhaus.com

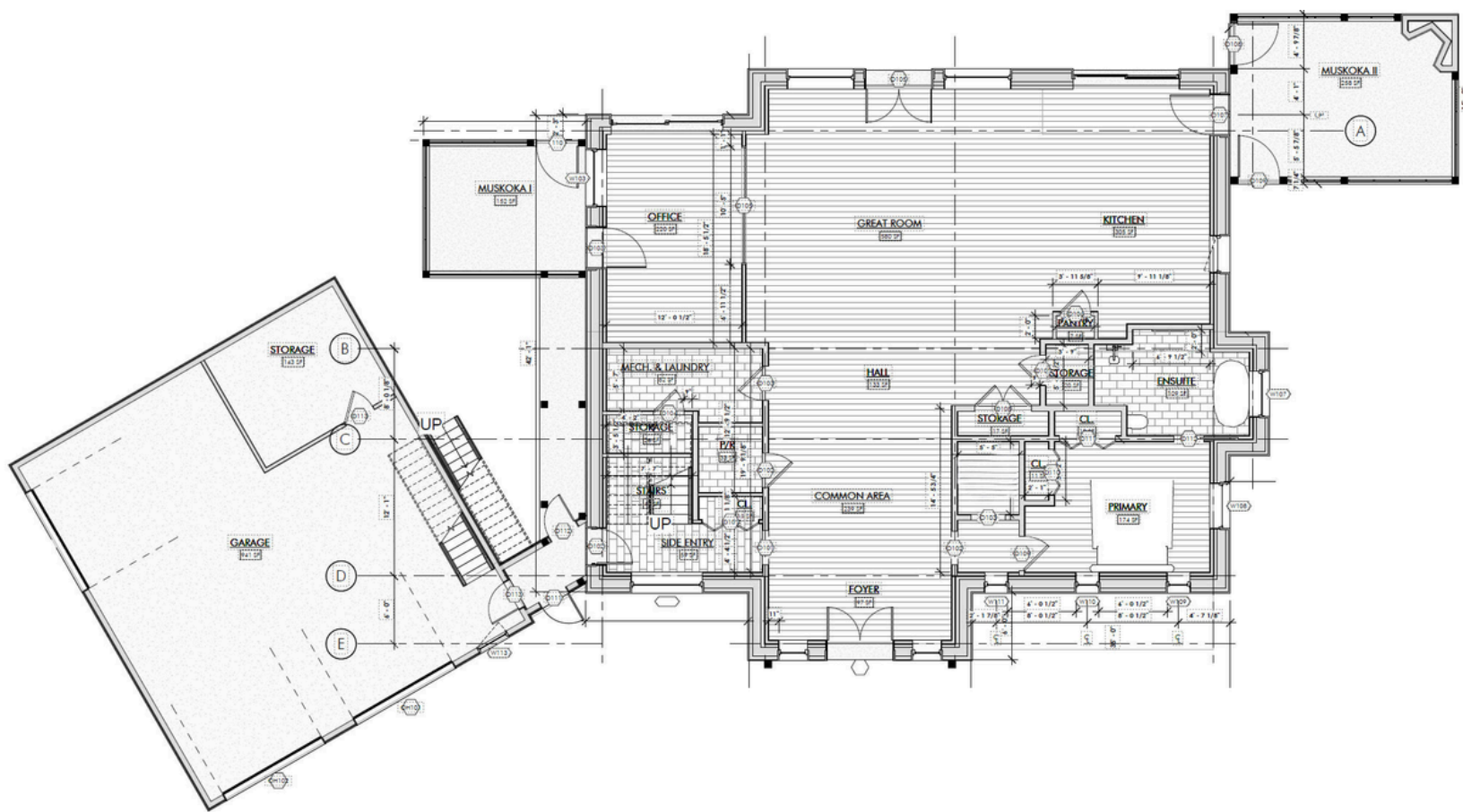


QuantumPassivhaus.com

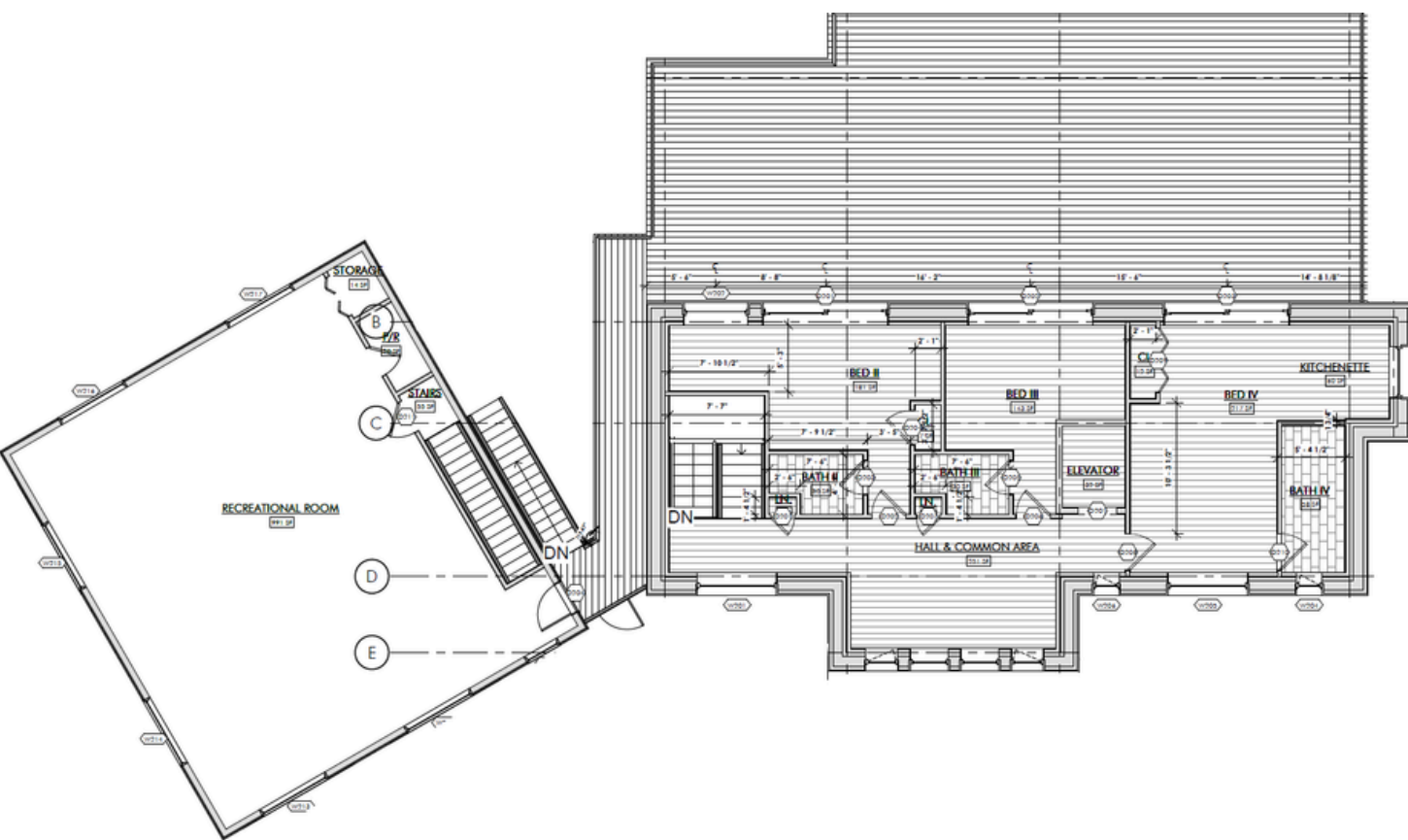


# FLOOR PLAN

## MAIN FLOOR



## SECOND FLOOR



(705) 286-0019



info@quantumpassivhaus.com



QuantumPassivhaus.com