

BEACH HOUSE

Light-filled, high-performance home designed as a retreat that prioritizes comfort, quiet, and connection to its surroundings.

LIVABLE AREA

1627 SQ FT

BEDROOMS

3

+ GARAGE

N/A SQ FT

BATHROOMS

2



5-10% OFF
UNTIL JAN 31



* Exterior materials, colours, and interior finishes are fully customizable and shown for illustrative purposes only.

OVERVIEW

- **Best suited for:** cottages, waterfront properties, rural retreats
- **Primary value:** a calm, comfortable living environment that enhances connection to place
- **Delivery:** engineered panels fabricated off-site for precision

INCLUDED & FLEXIBLE

INCLUDED

- Engineered prefab panels
- High-performance enclosure
- Airtightness-first detailing
- Install guidance + coordination

FLEXIBLE

- Layout adjustments (within limits)
- Exterior finishes
- Window/door package
- Essentials vs Turnkey scope

ENVIRONMENTAL FOOTPRINT

- Minimal embodied carbon through efficient panelized build
- Lower operational energy use than conventional recreational homes
- Reduced site impact, preserving the natural character of the building site

EVERYDAY COMFORT

- A sense of peace indoors driven by exceptionally quiet interiors
- Even temperatures that support year-round comfort in all seasons
- Calm, settled spaces designed for rest, retreat, and everyday living

ESTIMATED PRICING

PANELIZED BUILDING ENVELOPE

\$425K STARTING

- Engineered panel scope
- Off-site quality control
- Predictable sequencing

COMPLETE TURNKEY HOME

\$725K STARTING

- Foundation to move-in
- Trades + coordination
- Finishes affect final cost

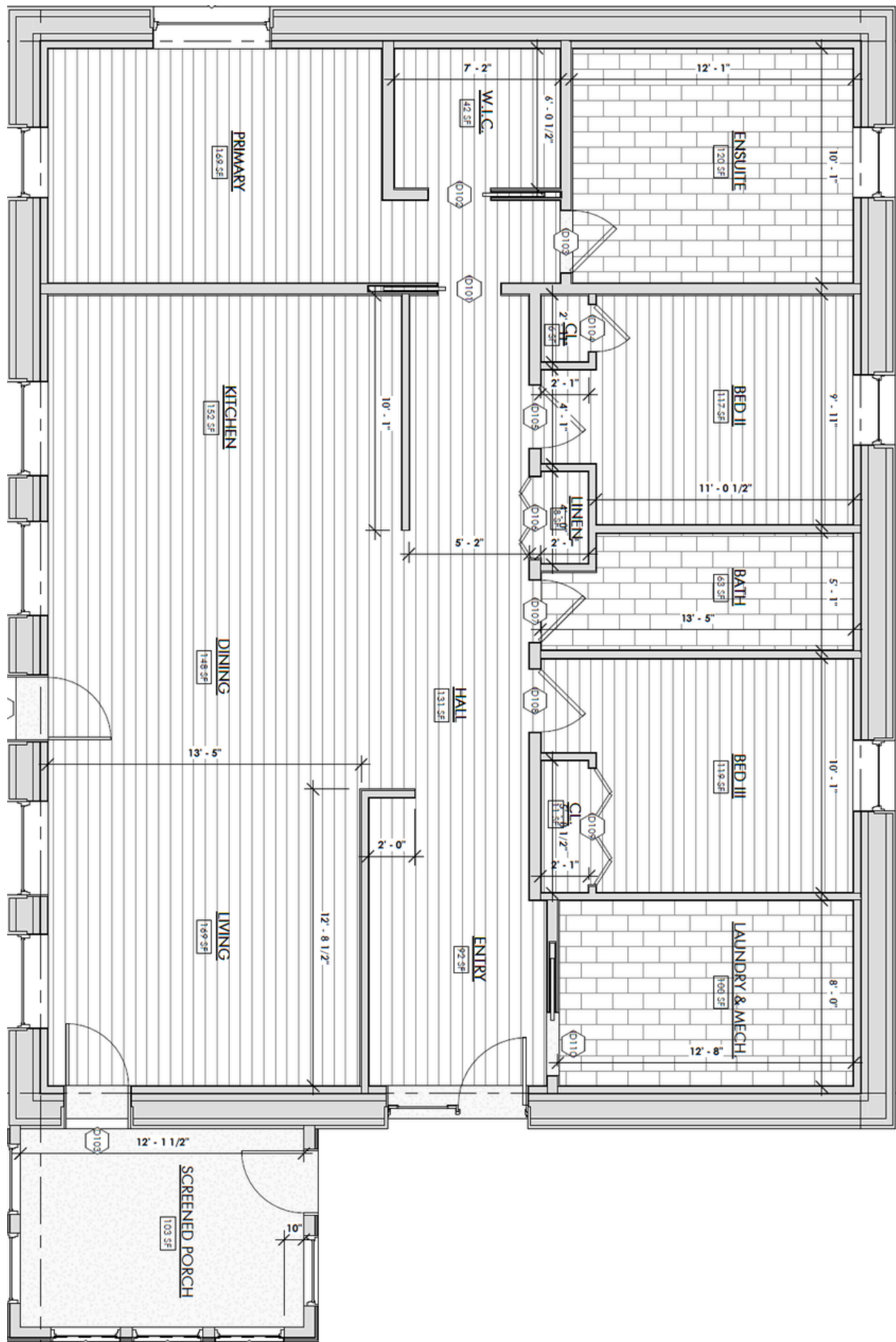
Pricing shown is for planning only and varies by design scope, site conditions, schedule, and finish level.

NEXT STEPS:

If Beach House is a good fit for your project, We'll review your site, timeline, and preferred package.

FLOOR PLAN

MAIN FLOOR



(705) 286-0019



info@quantumpassivhaus.com



QuantumPassivhaus.com