

PRAIRIE SMOKE

Flexible, high-performance home designed for families who want space to grow, adaptable layouts, and long-term comfort.

LIVABLE AREA

2073^{SQ}_{FT}

+ GARAGE

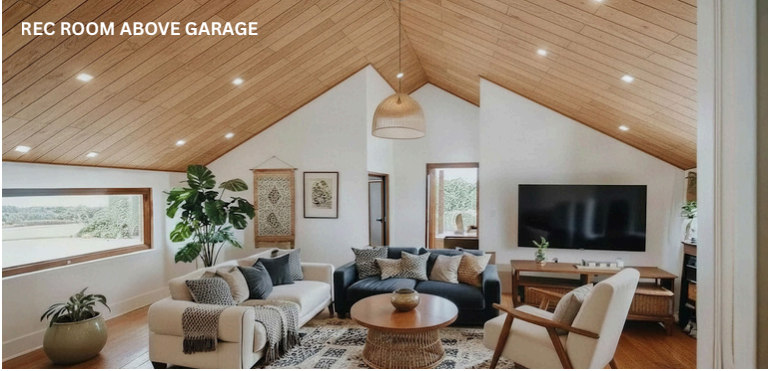
644^{SQ}_{FT}

BEDROOMS

3 + Den

BATHROOMS

2.5



* Exterior materials, colours, and interior finishes are fully customizable and shown for illustrative purposes only.

OVERVIEW

- **Best suited for:** Families, growing households, rural or suburban lots
- **Primary value:** Flexible layouts that balance space, comfort, and energy efficiency
- **Delivery:** Engineered panels fabricated off-site for precision

INCLUDED & FLEXIBLE

INCLUDED

- Engineered prefab panels
- High-performance enclosure
- Airtightness-first detailing
- Install guidance + coordination

FLEXIBLE

- Layout adjustments (within limits)
- Exterior finishes
- Window/door package
- Essentials vs Turnkey scope

ENVIRONMENTAL FOOTPRINT

- Minimal embodied carbon through efficient panelized build
- Lower operational energy use than conventional homes
- Reduced site impact, preserving the natural habitat of the build site

EVERYDAY COMFORT

- Quiet interiors that create a calm, settled living environment
- A sense of peace indoors driven by exceptionally quiet rooms
- Even temperatures with minimal drafts and cold spots
- Healthier indoor air from airtight, controlled construction

ESTIMATED PRICING

PANELIZED BUILDING ENVELOPE

\$497K STARTING

- Engineered panel scope
- Off-site quality control
- Predictable sequencing

COMPLETE TURNKEY HOME

\$897K STARTING

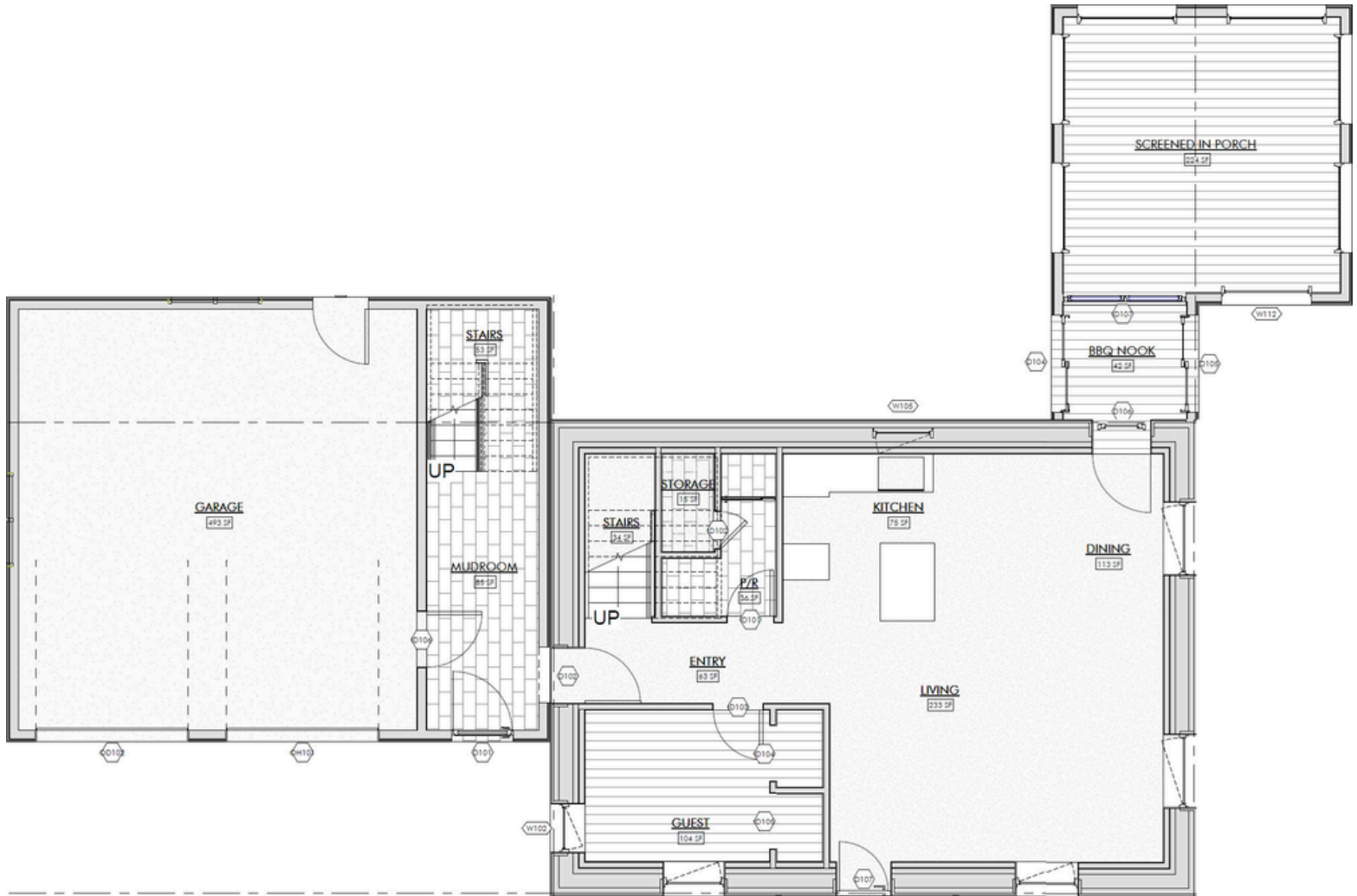
- Foundation to move-in
- Trades + coordination
- Finishes affect final cost

Pricing shown is for planning only and varies by design scope, site conditions, schedule, and finish level.

NEXT STEPS:

If Prairie smoke a good fit for your project, We'll review your site, timeline, and preferred package.

MAIN FLOOR



SECOND FLOOR