

# WOOD LILY

Single-storey, high-performance home designed for comfort, durability, and predictable construction.

LIVABLE AREA

1693 SQ FT

+ GARAGE

N/A SQ FT

BEDROOMS

3

BATHROOMS

2.5



5-10% OFF  
UNTIL JAN 31



\* Exterior materials, colours, and interior finishes are fully customizable and shown for illustrative purposes only.

## OVERVIEW

- **Best suited for:** families, downsizers, rural/cottage lots
- **Primary value:** comfort + efficiency with fewer site risks
- **Delivery:** engineered panels fabricated off-site for precision

## INCLUDED & FLEXIBLE

### INCLUDED

- Engineered prefab panels
- High-performance enclosure
- Airtightness-first detailing
- Install guidance + coordination

### FLEXIBLE

- Layout adjustments (within limits)
- Exterior finishes
- Window/door package
- Essentials vs Turnkey scope

## ENVIRONMENTAL FOOTPRINT

- Minimal embodied carbon through efficient panelized build
- Significantly lower energy use than code-minimum homes
- Reduced site disturbance and waste, respecting the natural habitat of the build site

## EVERYDAY COMFORT

- Reduced outside noise and fewer everyday distractions
- A sense of peace indoors driven by exceptionally quiet rooms
- Consistent temperatures with minimal drafts and cold spots
- Healthier indoor air from airtight, controlled construction

## ESTIMATED PRICING

### PANELIZED BUILDING ENVELOPE

**\$425K** STARTING

- Engineered panel scope
- Off-site quality control
- Predictable sequencing

### COMPLETE TURNKEY HOME

**\$725K** STARTING

- Foundation to move-in
- Trades + coordination
- Finishes affect final cost

Pricing shown is for planning only and varies by design scope, site conditions, schedule, and finish level.

## NEXT STEPS:

If Woodlily is a good fit for your project, We'll review your site, timeline, and preferred package.



(705) 286-0019



info@quantumpassivhaus.com

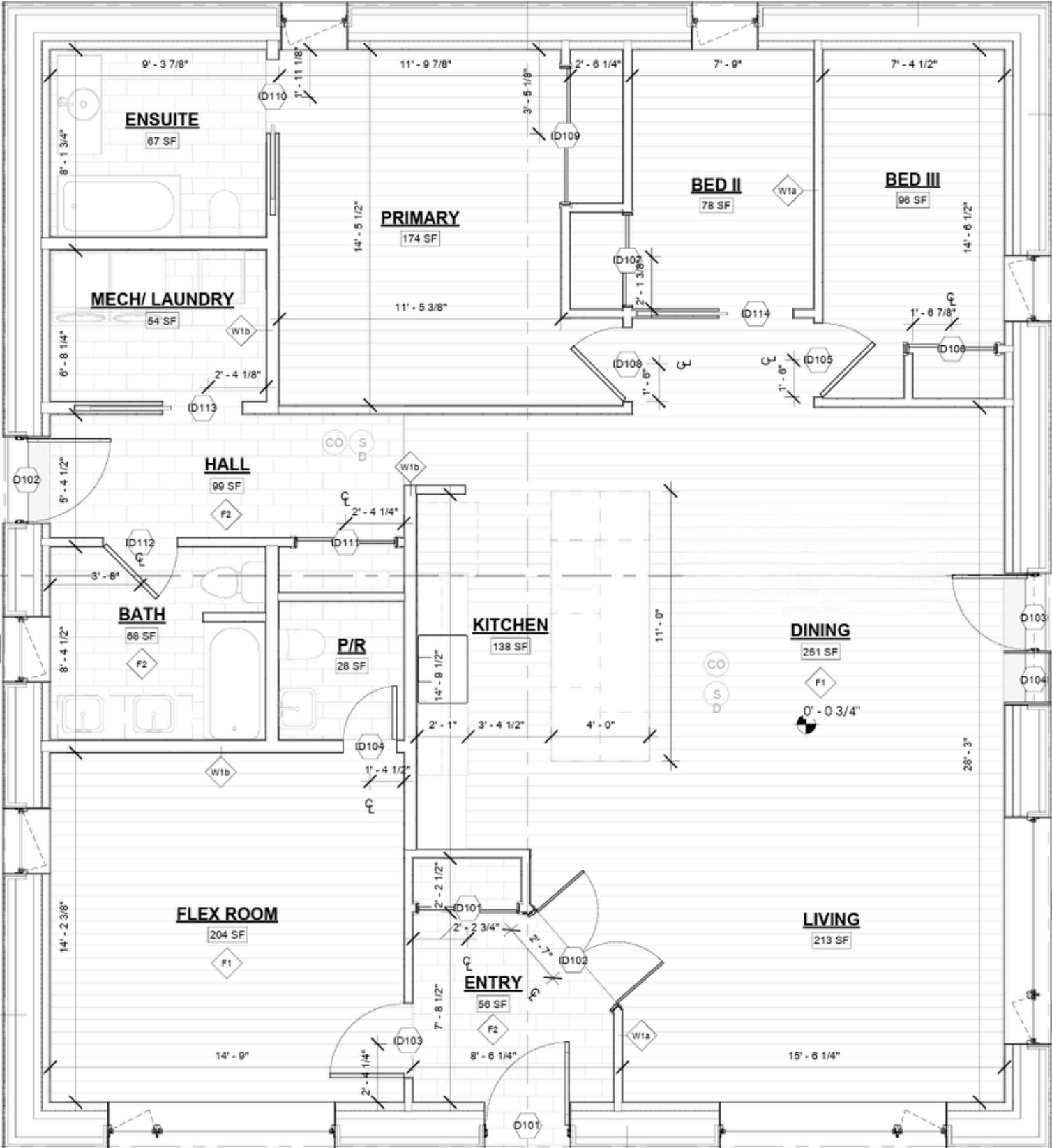


QuantumPassivhaus.com



# FLOOR PLAN

## MAIN FLOOR



(705) 286-0019



info@quantumpassivhaus.com



QuantumPassivhaus.com

