

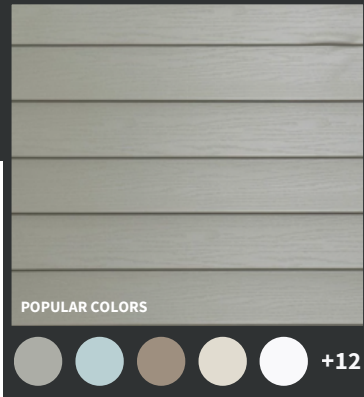
Standard **FINISHES** GUIDE

20
26

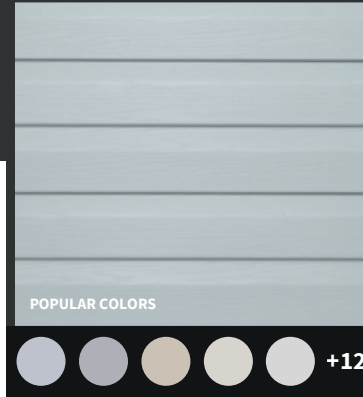


EXTERIOR

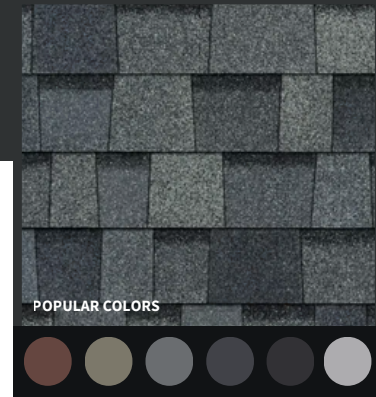
Section 01



Wall Cladding — A
Double 4" Horizontal Vinyl



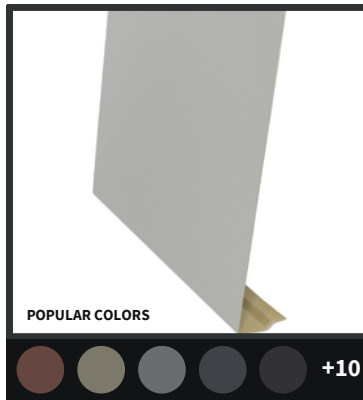
Wall Cladding — B
Double 4" Dutch Lap Vinyl



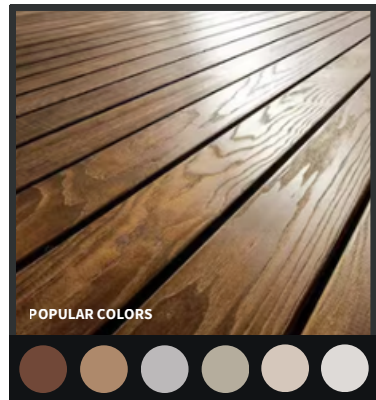
Roofing
Architectural Shingles



Soffit
Aluminum Vented Soffit



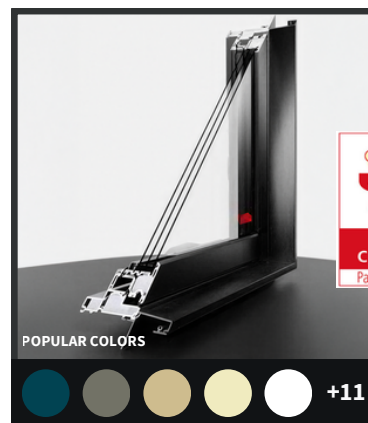
Fascia
Aluminum Fascia



Decking & Porches
Pressure Treated - Canadian Grade



Railings
PT + Aluminum Baluster



Windows & Doors
Fiberglass — Triple Glaze

FLOORING

Section 02



Interior Flooring — Dry Areas
Floating Click Luxury Vinyl Plank Waterproof LVP



Interior Flooring — Wet Areas
Matte Rectified Ceramic Tile



In-Floor Heating Mat
Electric Mat + Thermostat — 120V

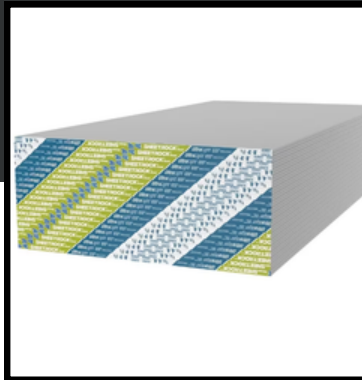
WALLS, CEILINGS & TRIM



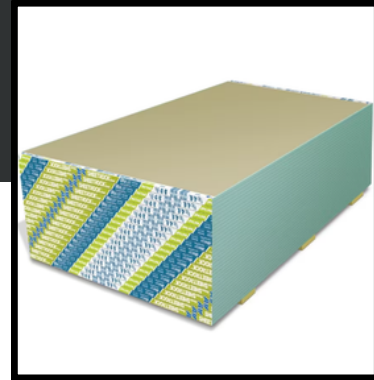
Section 03



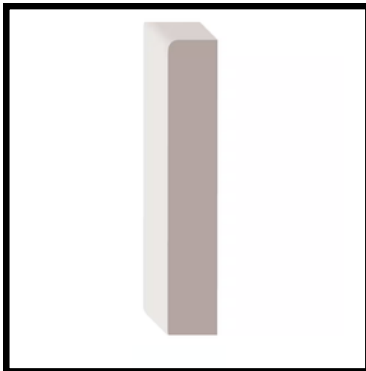
Interior Paint
Latex – Eggshell Finish



Interior Drywall
1/2" UltraLight Panel



Wet Walls
1/2" Greenboard – Mold Tough



Trim – Option A
White-Primed MDF Modern



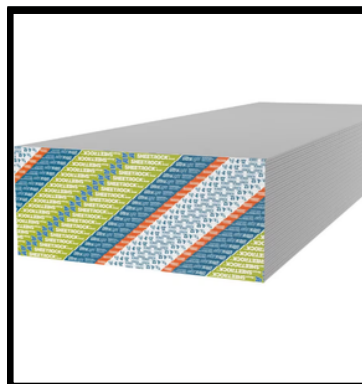
Trim – Option B
White-Primed MDF Colonial



Trim – Option C
White-Primed MDF Cont.



Ceiling Paint
Latex Ceiling Paint & Primer



Ceiling Drywall
CGC Sheetrock

Insulation Note:

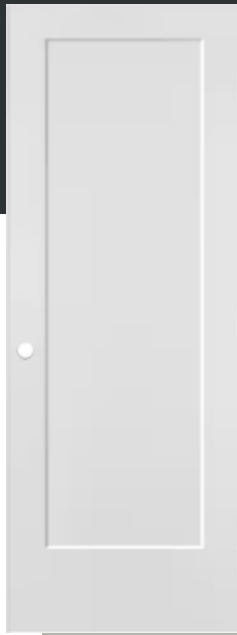
Main bedrooms and bathrooms include sound insulation as standard. Green board in all bathroom wet walls.

INTERIOR DOORS

Section 04



Privacy — Option A
6-Panel Solid Core



Privacy — Option B
1-Panel Solid Core



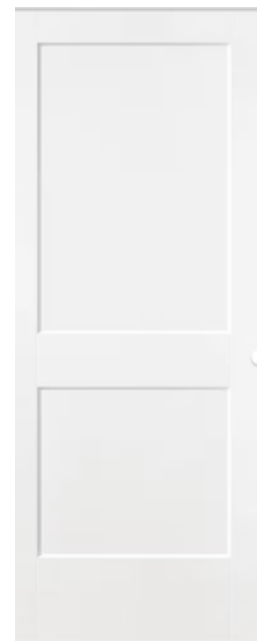
Privacy — Option C
2-Panel Solid Core



Passage — Option A
6-Panel Hollow Core



Passage — Option B
1-Panel Hollow Core



Passage — Option C
2-Panel Hollow Core

APPLIANCES



Section 05



Refrigerator
30" French Door – Bottom Freezer
Fingerprint Resistant Stainless Steel



Stove & Oven
30" Freestanding Electric – Smooth Top
Convection + Air Fry – Stainless Steel



Washer / Dryer
27" Stackable Ventless Tower
5.8 cu. ft. Washer + 7.8 cu. ft.
Heat Pump Dryer



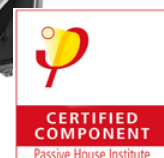
Water Heater
Electric Heat Pump – 40 GAL



Heating & Cooling
Single-Head Ductless Mini-Split



ERV
PHI certified Energy Recovery Ventilator



KITCHEN

Section 06



Cabinetry
Shaker Style — Soft-Close Hinges & Drawers



Countertops
Quartz



Kitchen Sink
Stainless Steel — Double Bowl — 32" x 18"
with Grids & Strainers



Laundry Sink
Freestanding Utility Tub — 24" Black

BATHROOM FIXTURES

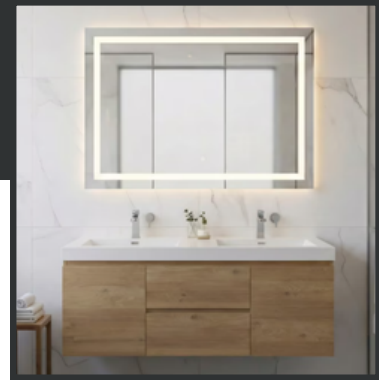
Section 07



Toilet
Dual Flush — Concealed 1-Piece



Shower Head
2-in-1 WaterSense — Chrome



Vanity — Main Bath
60" Double Sink Vanity



Mirror
24" x 30" Bevelled



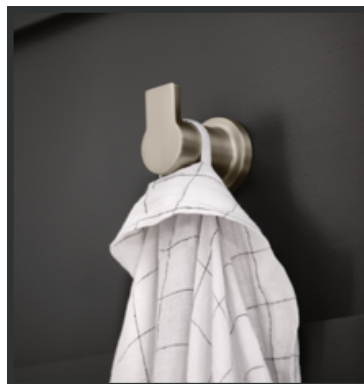
Shower Base
60" x 32" Solid Surface



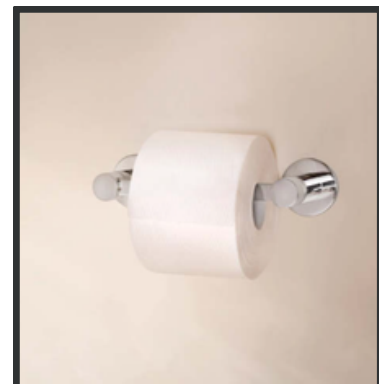
Towel Bar
24" Wall-Mounted — Chrome



Hand Towel Ring
Brushed Nickel — Wall Mount



Towel Hook
Brushed Nickel Robe Hook



Toilet Paper Holder
Double-Post — Chrome

LIGHTING

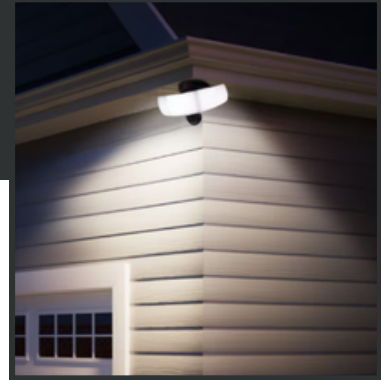
Section 08



Exterior Sconce
LED Wall Sconce – Black



Entry Light
Flush Mount – Medium



Security Light
Motion Activated – 240°



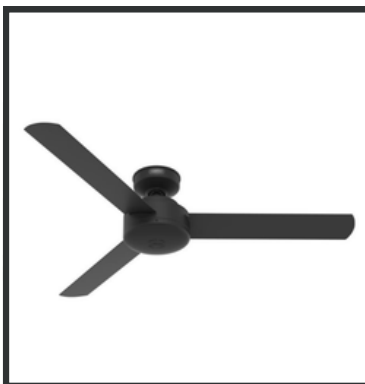
Ceiling Light – A
14" LED – Matte Black



Ceiling Light – B
14" LED – Brushed Nickel



Vanity Light
3-Light – Matte Black



Ceiling Fan
52" – Matte Black

Exterior Lighting

Wall sconce, entry light, and motion-activated security light included as standard on all exterior elevations.

Interior Lighting

Flush mount ceiling lights in Matte Black or Brushed Nickel – client selects finish at the same price point.

HARDWARE & HANDLES

Section 09



Privacy Handle

Matte Black – ADA



Passage Handle

Matte Black – ADA



Closet Lever

Passage – Matte Black



Cabinet Pulls

"D" type cabinet pulls

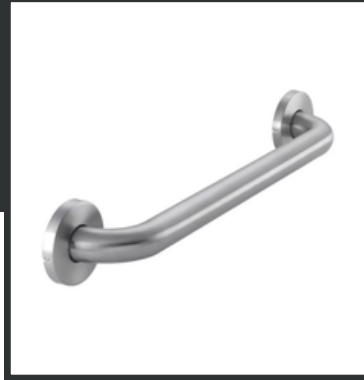
ACCESSIBILITY OPTIONS



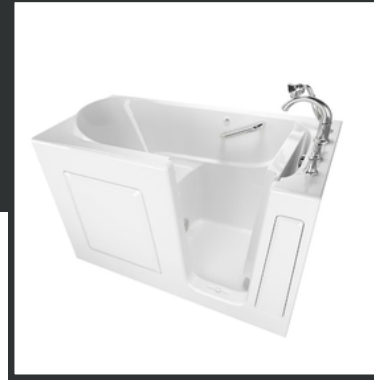
Section 10



Grab Bar — 24"
ADA — Stainless Steel



Grab Bar — 18"
ADA — Brushed Stainless



Walk-In Tub — 60"
Gelcoat Soaking — RH



Walk-In Tub — 52"
Whirlpool — LH Drain



ADA Handheld Shower
ADA Compliant — Chrome



Comfort Toilet — A
Extra Tall — 4.8 LPF



Comfort Toilet — B
Dual Flush 4L/6L — 1-Piece



Comfort Toilet — C
2-Piece Toilet - Elongated